



Science

"We will always have STEM with us. Some things will drop out the public eye and will go away, but there will always be science, engineering, and technology."

Katherine Johnson



At Wootton Primary school, our progressive science curriculum enables all of our children to be scientists and think scientifically in order to develop their **sense of self and the world** around them; they will **explore** and **investigate** problems in an environment that encourages them to **question, analyse** and think past their initial understanding. Through high-quality **teacher-directed instruction** and exciting **experiments**, our pupils will become lifelong science learners by **testing predictions, making observations** and **collecting data** whilst also developing their understanding of variables and the impact they can have on outcomes.

The scientific strands of **biology, chemistry and physics** are interwoven into engaging, active lessons taught as specific units, which have been sequenced to create an exciting, rigorous curriculum designed around the National Curriculum statements for: **knowledge, working scientifically and scientific enquiry**. All children each year will learn about **scientists from the past and present** in order to build their knowledge base and understanding.

YEAR
R

Nocturnal
Animals



Space



Seasons



Dinosaurs

herbivores and
carnivores

Growing and changes
over time

(Life cycles and Ice experiments)

Floating and
Sinking



Habitats and different
environments

(including animals that live in
different places)



Science

YEAR

1

"We will always have STEM with us. Some things will drop out of the public eye and will go away, but there will always be science, engineering, and technology." Katherine Johnson

Seasonal changes

(Taught throughout the year)



Animals, including humans



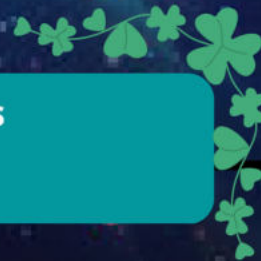
Working
scientifically
at KS1



Everyday
Materials



Plants



Consolidation of
Y1 Science

Science

YEAR
2

"We will always have STEM with us. Some things will drop out the public eye and will go away, but there will always be science, engineering, and technology." Katherine Johnson

Uses of
everyday
materials



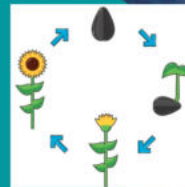
Living things and
their habitats

Movement
Reproduction
Sensitivity

Growth
Reproduce
Excretion
Nutrition

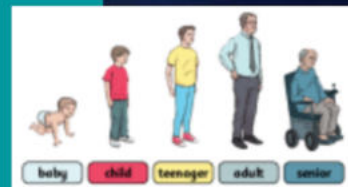


Plants



Working
scientifically
at KS1

Animals
including
humans



Consolidation of
Y2 Science

Science

YEAR
3

"We will always have STEM with us. Some things will drop out the public eye and will go away, but there will always be science, engineering, and technology." Katherine Johnson

Rocks



Animals including humans



Forces and Magnets



Plants



Working scientifically at KS2

Light



Consolidation of
Y3 Science

Science

YEAR
4

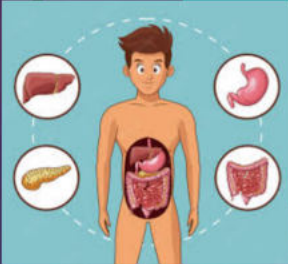
"We will always have STEM with us. Some things will drop out the public eye and will go away, but there will always be science, engineering, and technology." Katherine Johnson

Sound



Animals including humans

Digestive system



Changing states

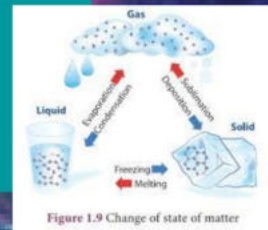


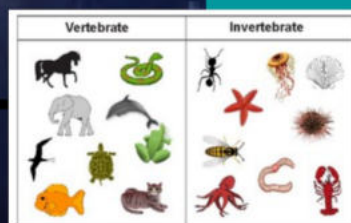
Figure 1.9 Change of state of matter

Electricity



Working scientifically at KS2

Living things and their habitats



Consolidation of
Y4 Science

Science

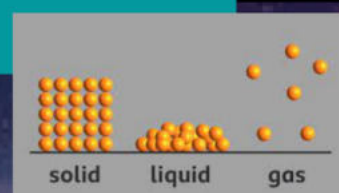
YEAR
5

"We will always have STEM with us. Some things will drop out the public eye and will go away, but there will always be science, engineering, and technology." Katherine Johnson

Forces and magnets



Materials



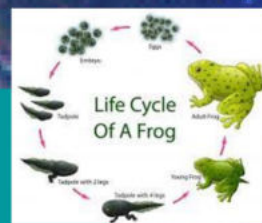
Earth and Space

Trip to the Space Centre



Living things and their habitats

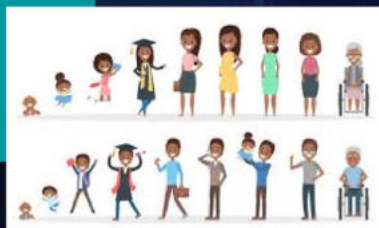
Plant and animal life cycles



Working scientifically at KS2

Animals including humans

Human life cycle



Consolidation of Y5 Science

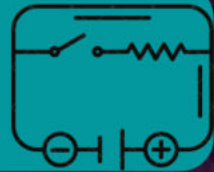
Science

YEAR
6

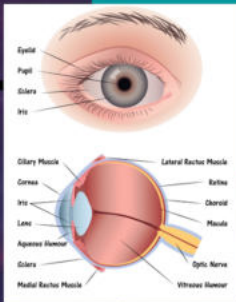
"We will always have STEM with us. Some things will drop out the public eye and will go away, but there will always be science, engineering, and technology." Katherine Johnson



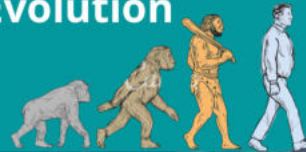
Electricity



Light

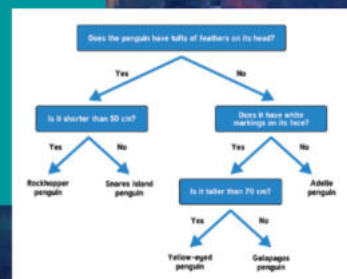


Evolution



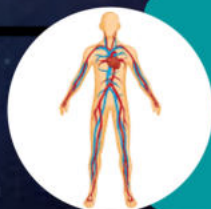
Living things
and their
habitats

Classification



Working
scientifically
at KS2

Animals including
humans



Consolidation of
Y6 Science